

# Thompson Industrial Site

Trenton, South Carolina



## Site Information and Location Map

### Location

Community: Trenton  
 County: Edgefield

### Physical Characteristics

Size: 262 acres/106 hectares  
 Subdividable: Yes, by 10 acre(s)  
 Price Per Acre: \$8,000  
 Price Range: \$8,000 to \$30,000  
 Soil Type: Sandy Loam  
 Elevation Range: 588 to 626 feet



### Transportation Access

Interstate(s): I-20: 8 miles/13 km; I-26 : 49 miles/79 km  
 Commercial Airport: Augusta Regional: 26 miles/42 km  
 Private Airport: Twin Lakes: 6 miles/10 km  
 Rail: None  
 Container Port: Charleston : 144 miles/230 km

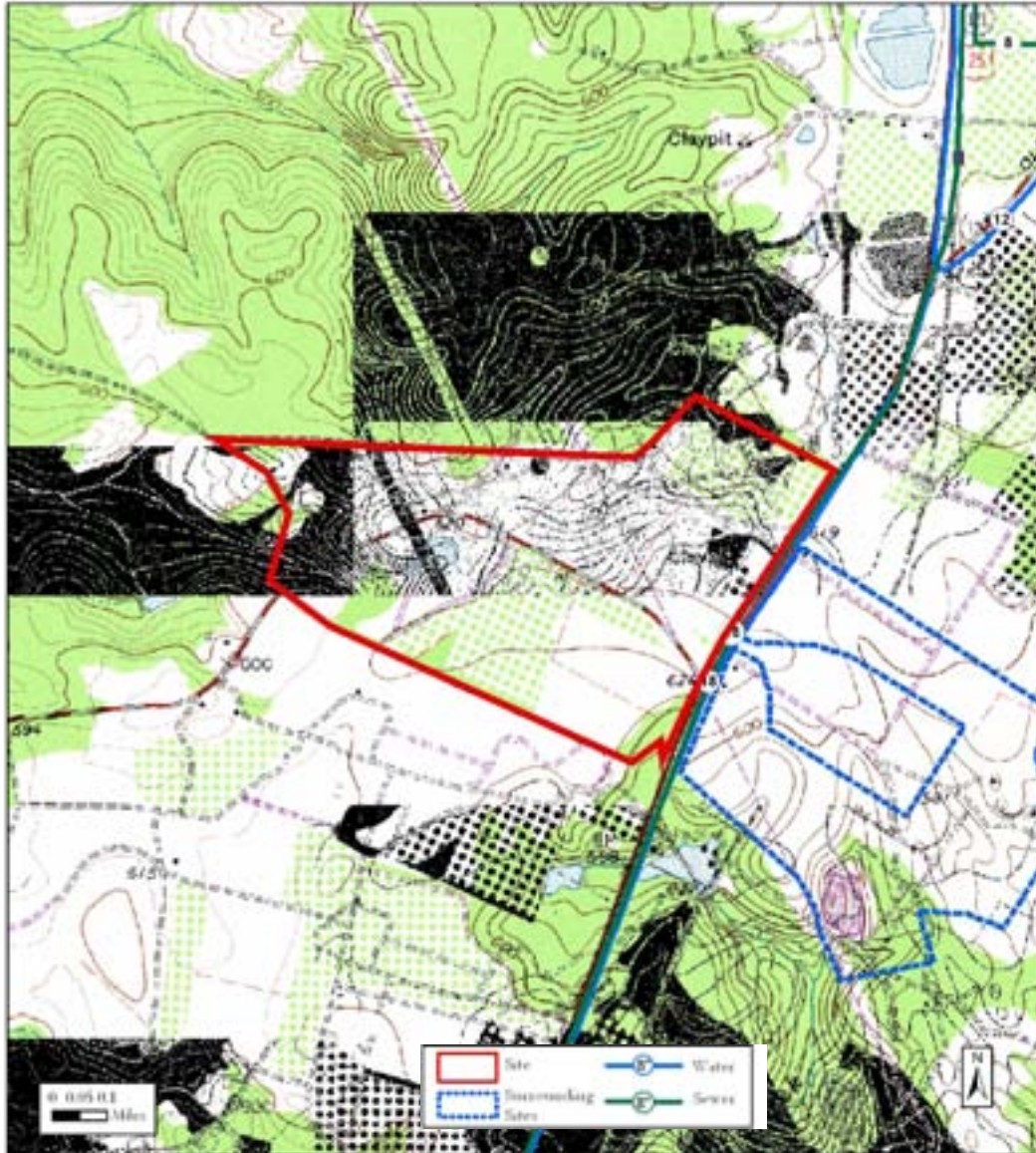
### Community Information

Rural Development Act: Least Developed  
 Foreign Trade Zone: No  
 Multicounty Industrial Park: No  
 Related Counties:  
 Tax Map ID: N/A  
 Zoned Industrial: No  
 Zoning or Regulations: None  
 Current Landuse(s): Dormant  
 Surrounding Landuse(s): Commercial, Agricultural

### Contacts

South Carolina Department of Commerce 1201 Main Street, Suite 1600 Columbia, SC 29201 (803) 737-0400 info@sccommerce.com	Aiken - Edgefield Economic Development Partnership PO Box 1708 Aiken SC 29802 (803) 648-3362
--	---

This is a product of the South Carolina Department of Commerce (DOC). The information is derived from various sources and the DOC does not guarantee its accuracy nor make any representations concerning the suitability of the property for any particular purpose.



### Utilities and Services

Water Service:	Edgefield Co W&SA Wtr line ia along US 25,E Boundary	Remaining Capacity: -0.3 million gallons/day Size: 18 inches
Sewer Service:	No Service Swr line is along US 25, E Boundary	Remaining Capacity: Size:
Electric Service:	South Carolina Electric & Gas Co.	
Natural Gas:	SC Electric & Gas on property	Size: 6 inches
Fire Protection:	Trenton Fire Dept.	Rating: 6



Transportation Map and Surrounding Sites

