

Shaws Creek Industrial Site

Aiken, South Carolina

www.sccommerce.com



Site Information and Location Map

Location

Community: Aiken
County: Aiken



Physical Characteristics

Size: 740 acres/299 hectares
Subdividable: Yes, by 2 acre(s)
Additional Land: No
Price per Acre: \$25,000
Soil Type: Sands, Loamy Sands
Elevation Range: 380 to 500 feet

Transportation Access

Interstate(s): I-20: 3 miles/5 km; I-26 : 46 miles/74 km
Commercial Airport: Augusta Regional: 26 miles/42 km
Private Airport: Aiken Municipal: 5 miles/8 km
Rail: NSR
Container Port: Charleston : 132 miles/211 km

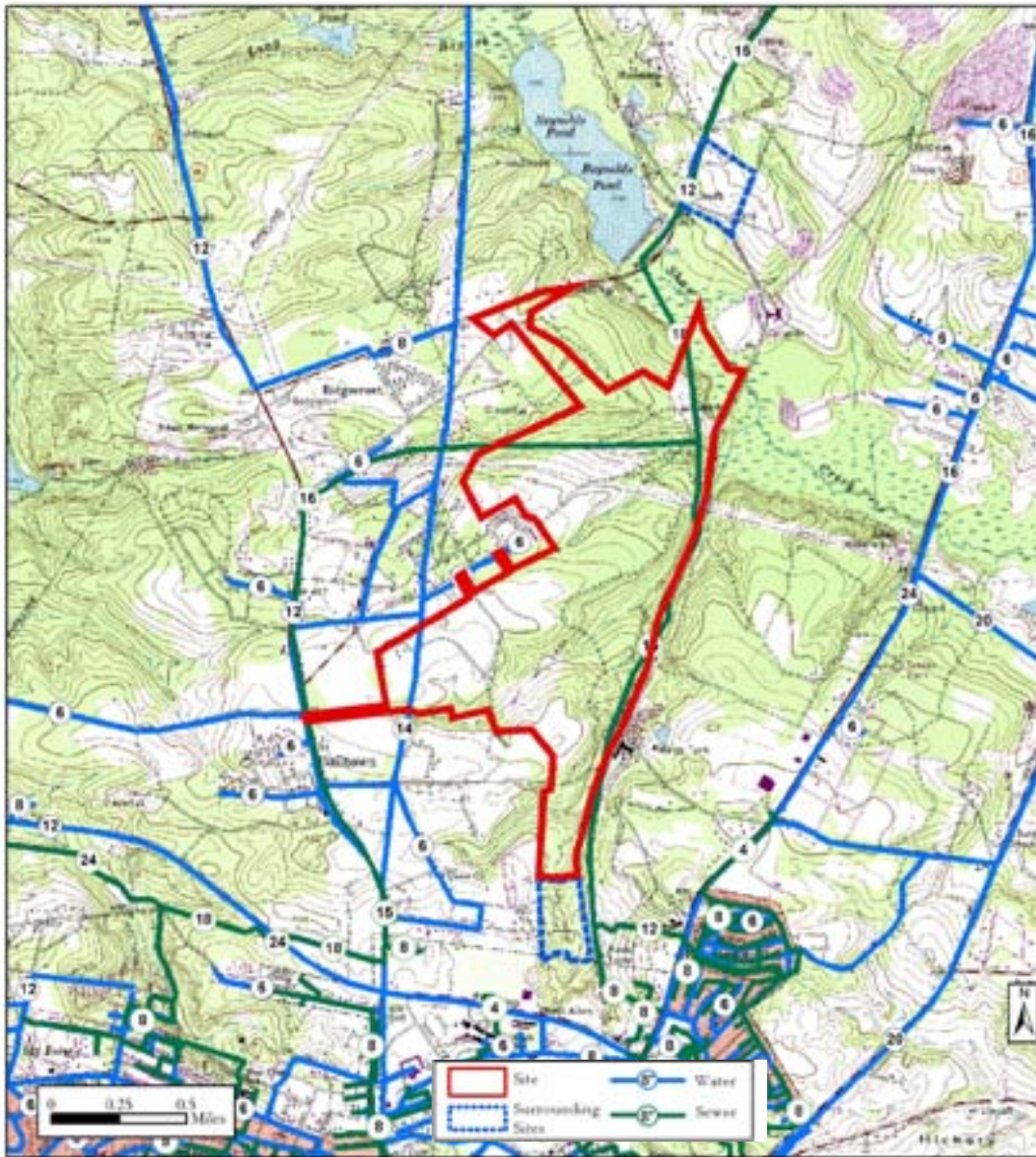
Community Information

Rural Development Act: Developed
Foreign Trade Zone: No
Multicounty Industrial Park: No
Related Counties:
Tax Map ID:
Zoned Industrial: Yes
Zoning or Regulations: Industrial
Current Landuse(s): Dormant
Surrounding Landuse(s): Industrial

Contacts

South Carolina Department of Commerce 1201 Main Street, Suite 1600 Columbia, SC 29201 (803) 737-0400 info@sccommerce.com	Aiken - Edgefield Econ. Dev. Partnership PO Box 1708 Aiken SC 29802 (803) 648-3362
--	---

This is a product of the South Carolina Department of Commerce (DOC). The information is derived from various sources and the DOC does not guarantee its accuracy nor make any representations concerning the suitability of the property for any particular purpose.



Utilities and Services

Water Service:	City of Aiken Wtr line transects site in W area	Remaining Capacity: -3.435 million gallons/day Size: 14 inches
Sewer Service:	Aiken Co Pub Sv Auth/Horse Crk Swr line is along N boundary	Remaining Capacity: 2.119 million gallons/day Size: 16 inches
Electric Service:	South Carolina Electric & Gas Co.	
Natural Gas:	SC Electric & Gas	Size: 6 inches
Fire Protection:	Aiken Fire Dept.	Rating:

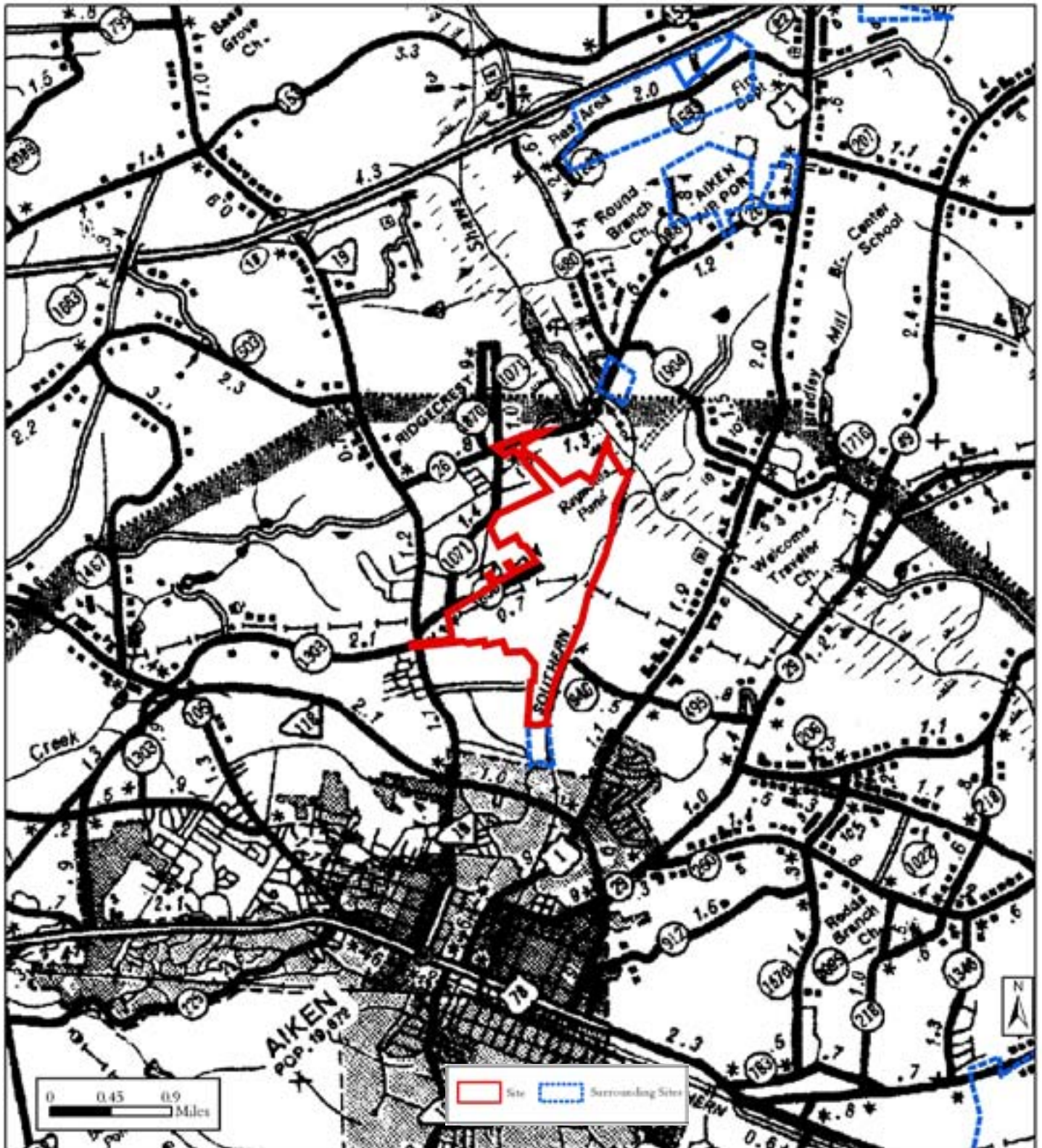
Shaws Creek Industrial Site

Aiken, South Carolina

www.sccommerce.com



Transportation Map and Surrounding Sites



SC Dept. of Commerce
1201 Main Street, Suite 1600
Columbia, SC 29201
803 737-0400
info@sccommerce.com

Source: SC Dept of Transportation
General Highway Map
740 acres/299 hectares

Aerial Photo

