

Miller - Trenton Industrial Site

Trenton, South Carolina



Site Information and Location Map

Location

Community: Trenton
County: Edgefield

Physical Characteristics

Size: 47 acres/19 hectares
Subdividable: Yes, by 24 acre(s)
Price Per Acre: \$10,000
Price Range:
Soil Type: Sandy Loam, Loamy Sand
Elevation Range: 577 to 617 feet



Transportation Access

Interstate(s): I-20: 9 miles/14 km; I-26 : 47 miles/76 km
Commercial Airport: Augusta Regional: 28 miles/45 km
Private Airport: Twin Lakes: 8 miles/ km
Rail: NSR
Container Port: Charleston : 145 miles/232 km

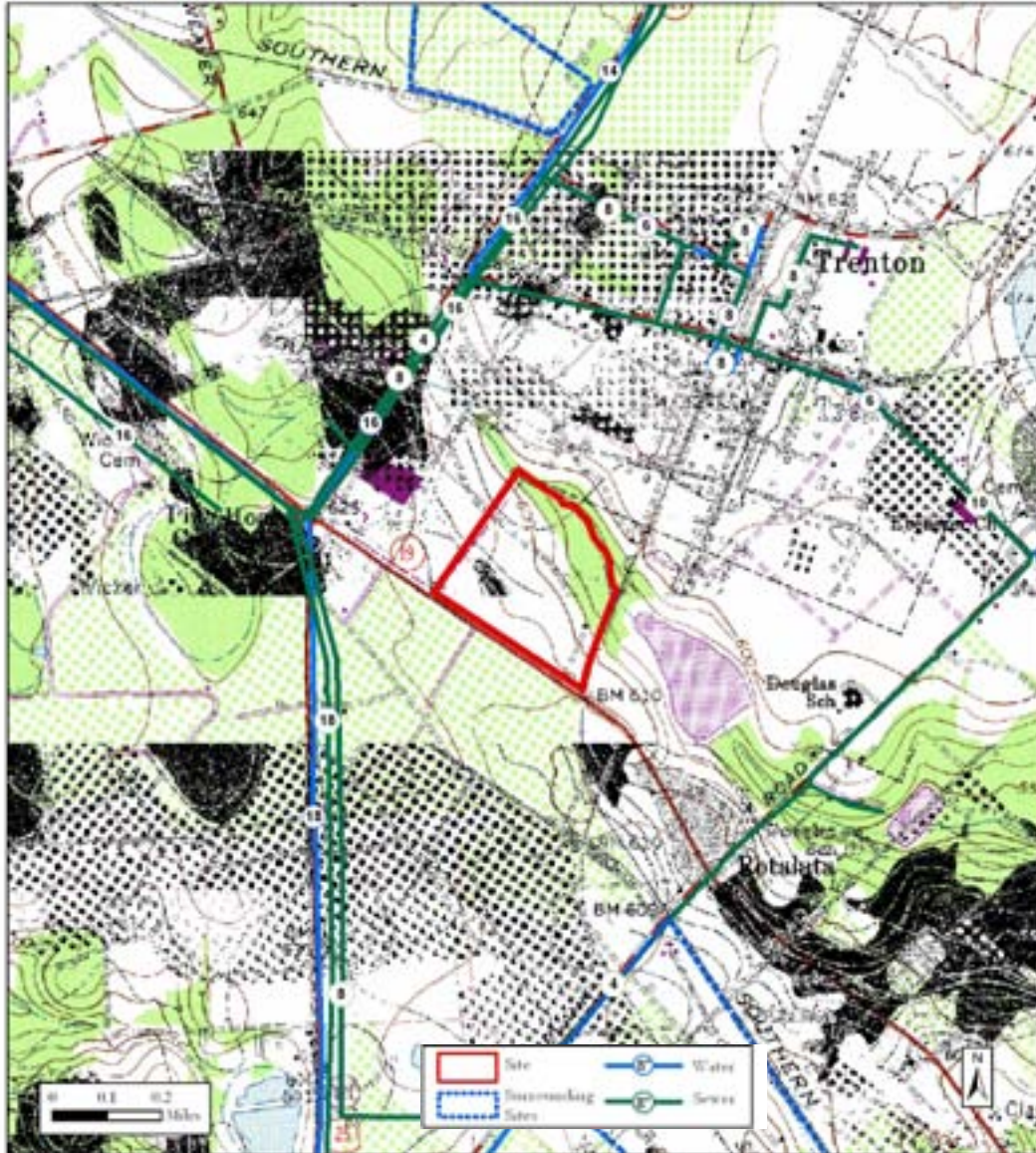
Community Information

Rural Development Act: Least Developed
Foreign Trade Zone: No
Multicounty Industrial Park: No
Related Counties:
Tax Map ID: 173-00-02-016
Zoned Industrial: No
Zoning or Regulations: Not Zoned
Current Landuse(s): Agricultural
Surrounding Landuse(s): Industrial, Commercial, Agricultural

Contacts

South Carolina Department of Commerce 1201 Main Street, Suite 1600 Columbia, SC 29201 (803) 737-0400 info@sccommerce.com	Aiken - Edgefield Economic Development Partnership PO Box 1708 Aiken SC 29802 (803) 648-3362
--	---

This is a product of the South Carolina Department of Commerce (DOC). The information is derived from various sources and the DOC does not guarantee its accuracy nor make any representations concerning the suitability of the property for any particular purpose.

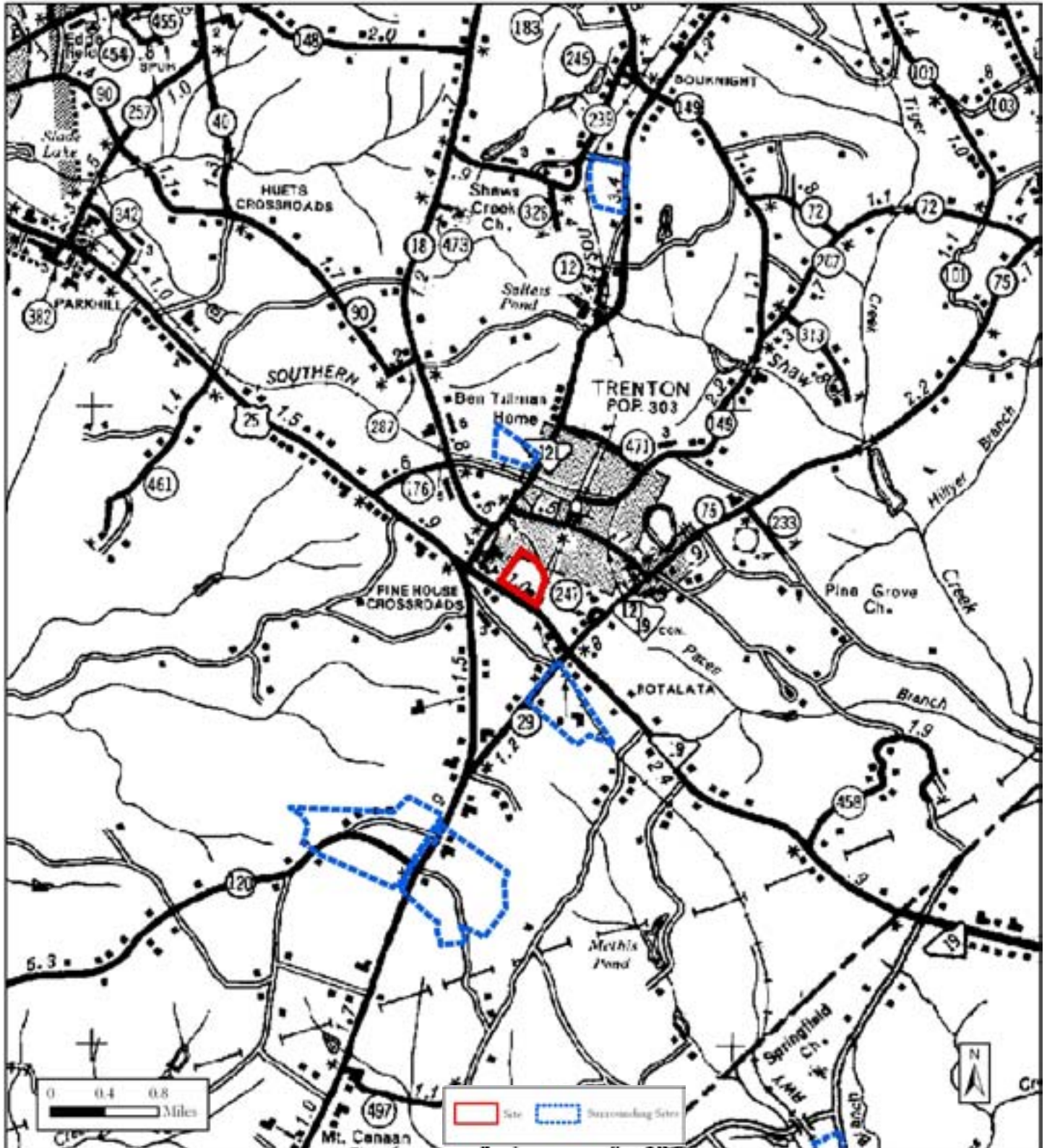


Utilities and Services

Water Service:	Edgefield Co W&SA Wtr line is 1500ft NW at US25/SC19 Junc	Remaining Capacity: -0.3 million gallons/day Size: 18 inches
Sewer Service:	EC W&SA/Trenton City Lagoon Swr line is 1500ft NW at US25/SC19 Junc	Remaining Capacity: -0.01 million gallons/day Size: 16 inches
Electric Service:	South Carolina Electric & Gas Co.	
Natural Gas:	SC Electric & Gas 1/4 mi from site	Size: 4 inches
Fire Protection:	Trenton Fire Dept.	Rating: 6



Transportation Map and Surrounding Sites



Aerial Photo

