

Inland Industrial Site

Trenton, South Carolina

www.sccommerce.com



Site Information and Location Map

Location

Community: Trenton
County: Edgefield

Physical Characteristics

Size: 58 acres/23 hectares
Subdividable: Yes, by 5 acre(s)
Price Per Acre:
Price Range: \$8,000 to \$8,000
Soil Type: Sandy Loam, Loamy Sand
Elevation Range: 600 to 631 feet



Transportation Access

Interstate(s): I-20: 12 miles/19 km; I-26 : 43 miles/69 km
Commercial Airport: Augusta Regional: 31 miles/50 km
Private Airport: Saluda County: 11 miles/18 km
Rail: NSR
Container Port: Charleston : 146 miles/234 km

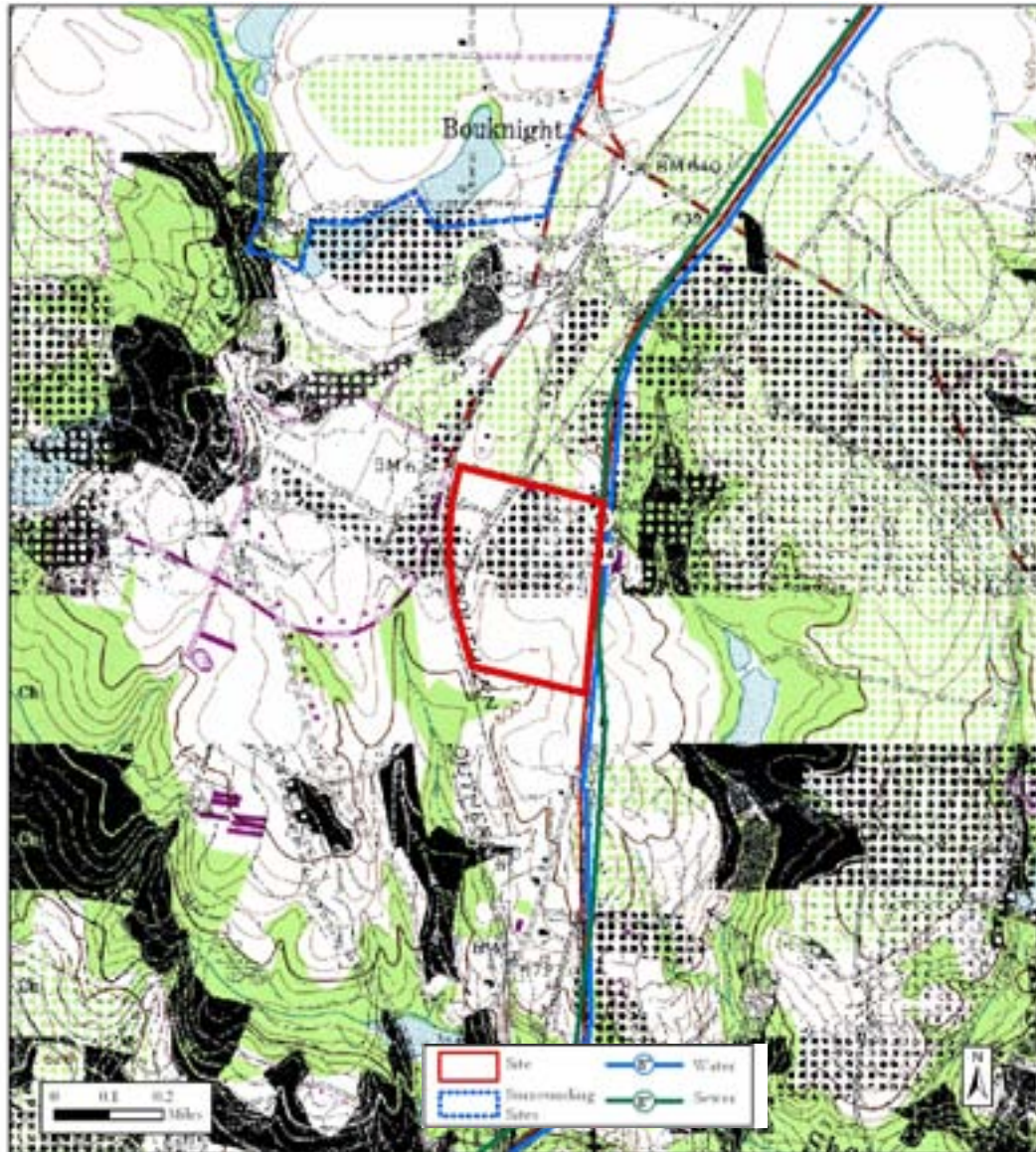
Community Information

Rural Development Act: Least Developed
Foreign Trade Zone: No
Multicounty Industrial Park: No
Related Counties:
Tax Map ID: 171-00-00-047-000, 171-00-00-048-000
Zoned Industrial: No
Zoning or Regulations: Not Zoned
Current Landuse(s): Agricultural
Surrounding Landuse(s): Industrial, Residential

Contacts

South Carolina Department of Commerce 1201 Main Street, Suite 1600 Columbia, SC 29201 (803) 737-0400 info@sccommerce.com	Aiken - Edgefield Economic Development Partnership PO Box 1708 Aiken SC 29802 (803) 648-3362
--	---

This is a product of the South Carolina Department of Commerce (DOC). The information is derived from various sources and the DOC does not guarantee its accuracy nor make any representations concerning the suitability of the property for any particular purpose.



Utilities and Services

Water Service:	Edgefield Co W&SA Wtr line is along SC 121 at E boundary	Remaining Capacity: -0.3 million gallons/day Size: 14 inches
Sewer Service:	No Service Swr line is along SC 121 at E boundary	Remaining Capacity: Size:
Electric Service:	South Carolina Electric & Gas Co.	
Natural Gas:	None	Size: 0 inches
Fire Protection:	Johnston Fire Dept.	Rating: 6

