



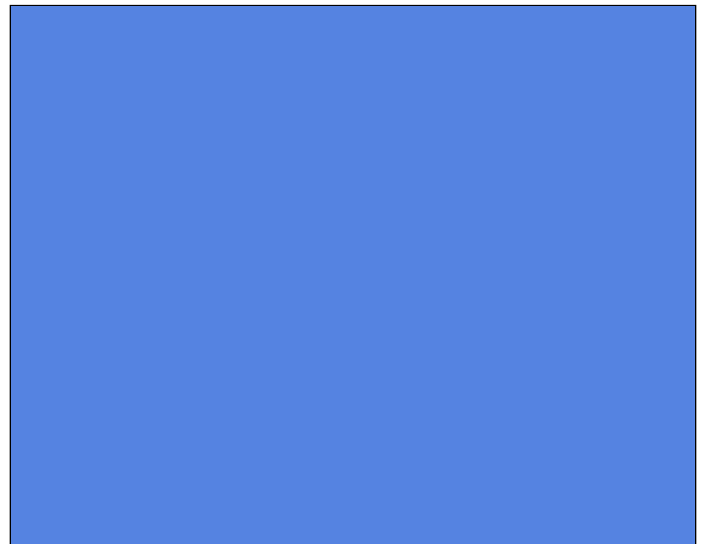
Site Information and Location Map

Location

Community: Aiken
County: Aiken

Physical Characteristics

Largest Tract Available: 23 acres/9 hectares
Total Park Acres: 379 acres/153 hectares
Min. Tract Available: 7 acre(s)
Remaining Acres: 142 acres
Price Per Acre:
Price Range: \$10,000 to \$15,000
Soil Type: Sands, Loamy Sands
Elevation Range: 388 to 512 feet



Transportation Access

Interstate(s): I-20: 1 miles/2 km; I-26 : 42 miles/68 km
Commercial Airport: Augusta Regional: 31 miles/50 km
Private Airport: Aiken Municipal: 1 miles/2 km
Rail: None
Container Port: Charleston : 133 miles/213 km

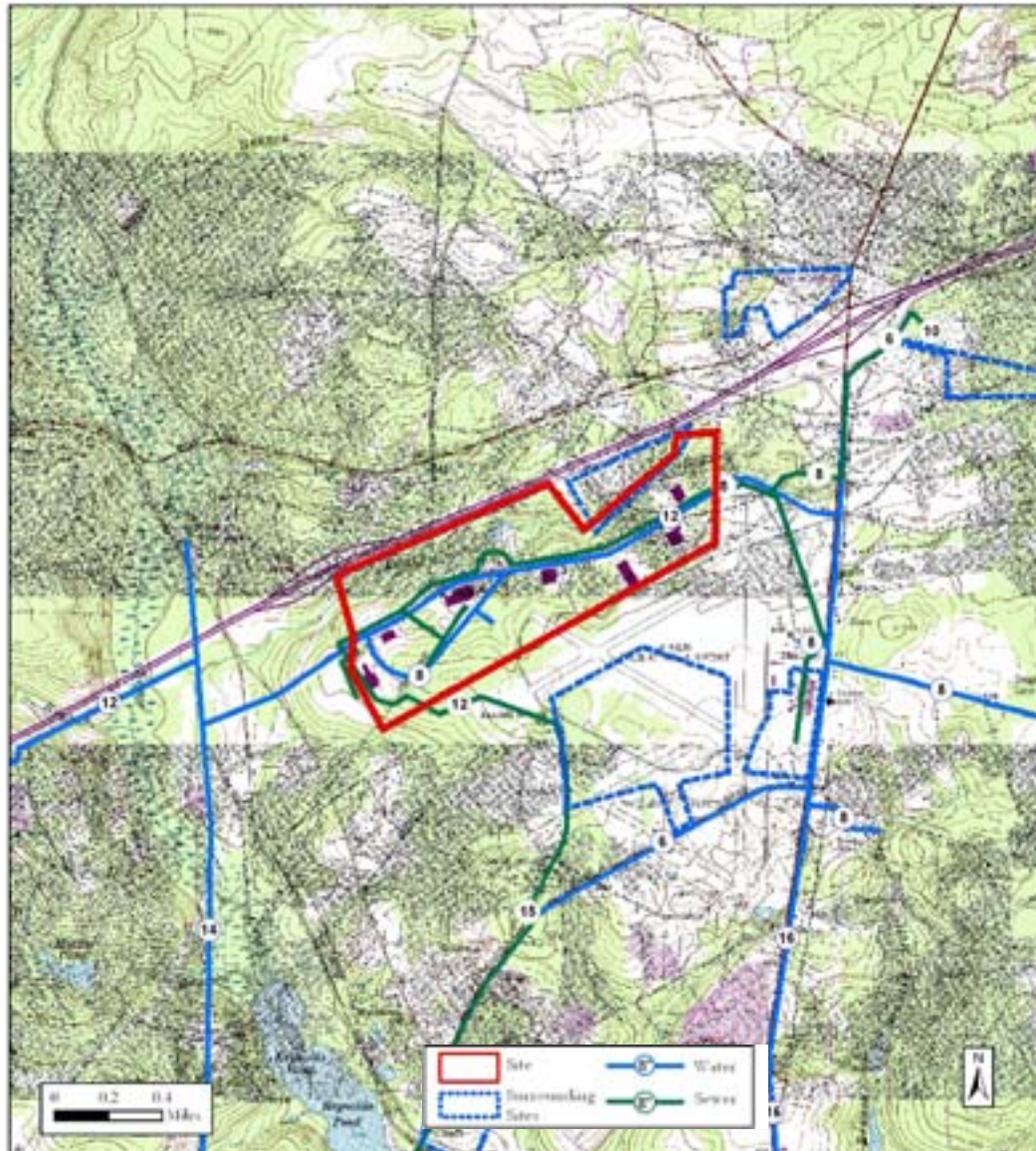
Community Information

Rural Development Act: Developed
Foreign Trade Zone: No
Multicounty Industrial Park: No
Related Counties:
Tax Map ID: 133-17-01-1;117-00-10-2;117-00-11-4
Zoned Industrial: Yes
Zoning or Regulations: Usual Protective Covenants
Current Landuse(s): Developing Industrial Park
Surrounding Landuse(s): Commercial, Industrial

Contacts

South Carolina Department of Commerce 1201 Main Street, Suite 1600 Columbia, SC 29201 (803) 737-0400 info@sccommerce.com	Aiken - Edgefield Econ. Dev. Partnership PO Box 1708 Aiken SC 29802 (803) 641-3300
--	---

This is a product of the South Carolina Department of Commerce (DOC). The information is derived from various sources and the DOC does not guarantee its accuracy nor make any representations concerning the suitability of the property for any particular purpose.



Utilities and Services

Water Service:	City of Aiken	Remaining Capacity: -3.435 million gallons/day Size: 12 inches
Sewer Service:	Aiken Co Pub Sv Auth/Horse Crk	Remaining Capacity: 1.065 million gallons/day Size: 8 inches
Electric Service:	South Carolina Electric & Gas Co.	
Natural Gas:	SC Electric & Gas	Size: 6 inches
Fire Protection:	Center Fire Dept.	Rating: 2

