



Site Information and Location Map

Location

Community: New Ellenton
County: Aiken

Physical Characteristics

Size: 175 acres/71 hectares
Subdividable: Yes, by 5 acre(s)
Additional Land: 422 acre(s)
Price per Acre: \$6,000 to \$10,000
Soil Type: Sands/Loamy Sands
Elevation Range: 300 to 410 feet



Transportation Access

Interstate(s): I-20: 20 miles/32 km; I-26 : 57 miles/92 km
Commercial Airport: Augusta Regional: 21 miles/34 km
Private Airport: Aiken Municipal: 21 miles/34 km
Rail: None
Container Port: Port Royal : 105 miles/168 km

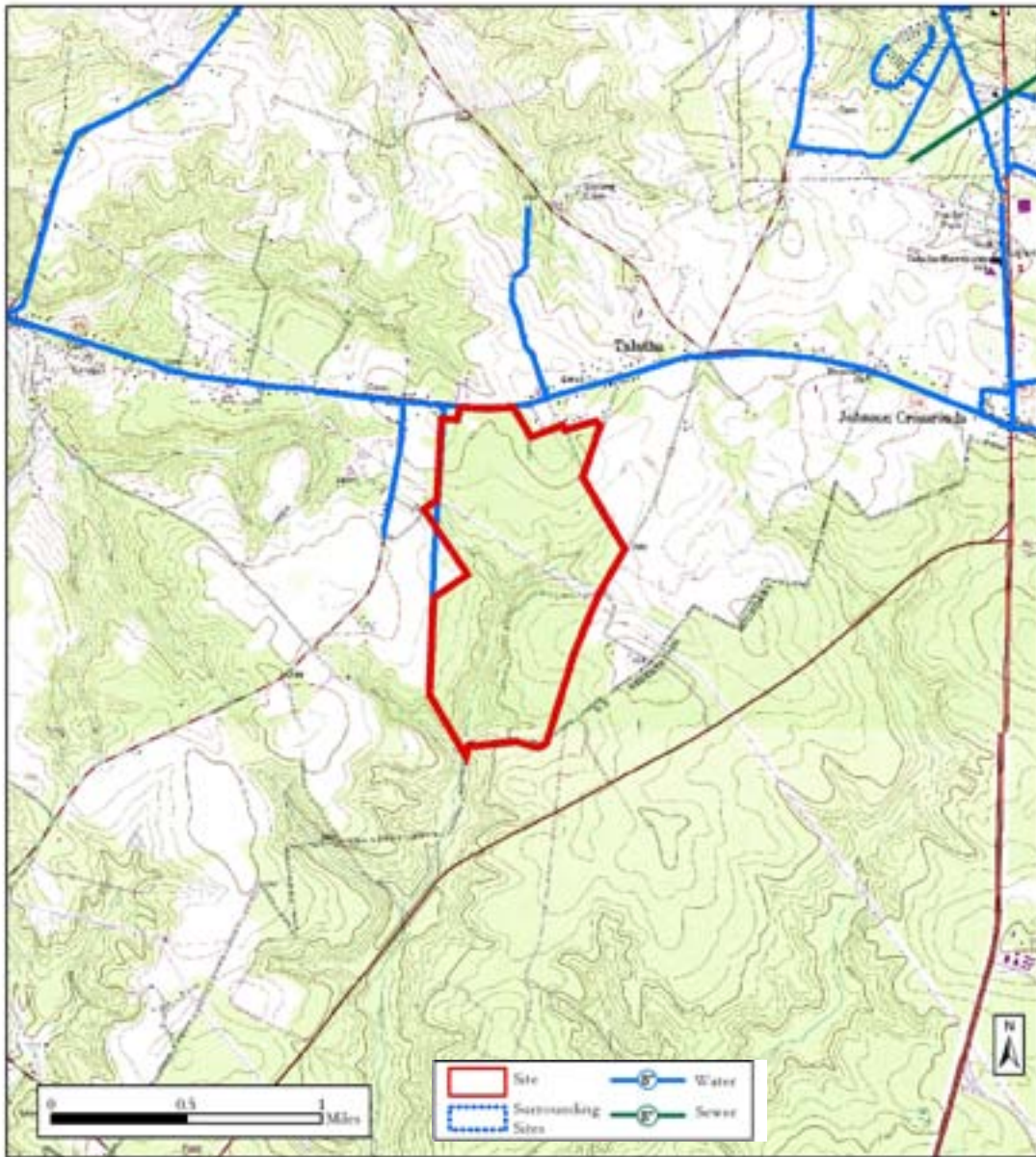
Community Information

Rural Development Act: Developed
Foreign Trade Zone: No
Multicounty Industrial Park: No
Related Counties:
Tax Map ID:
Zoned Industrial: No
Zoning or Regulations: Planned Use District - Research Park
Current Landuse(s): Developing Research Park
Surrounding Landuse(s): Agricultural, Industrial

Contacts

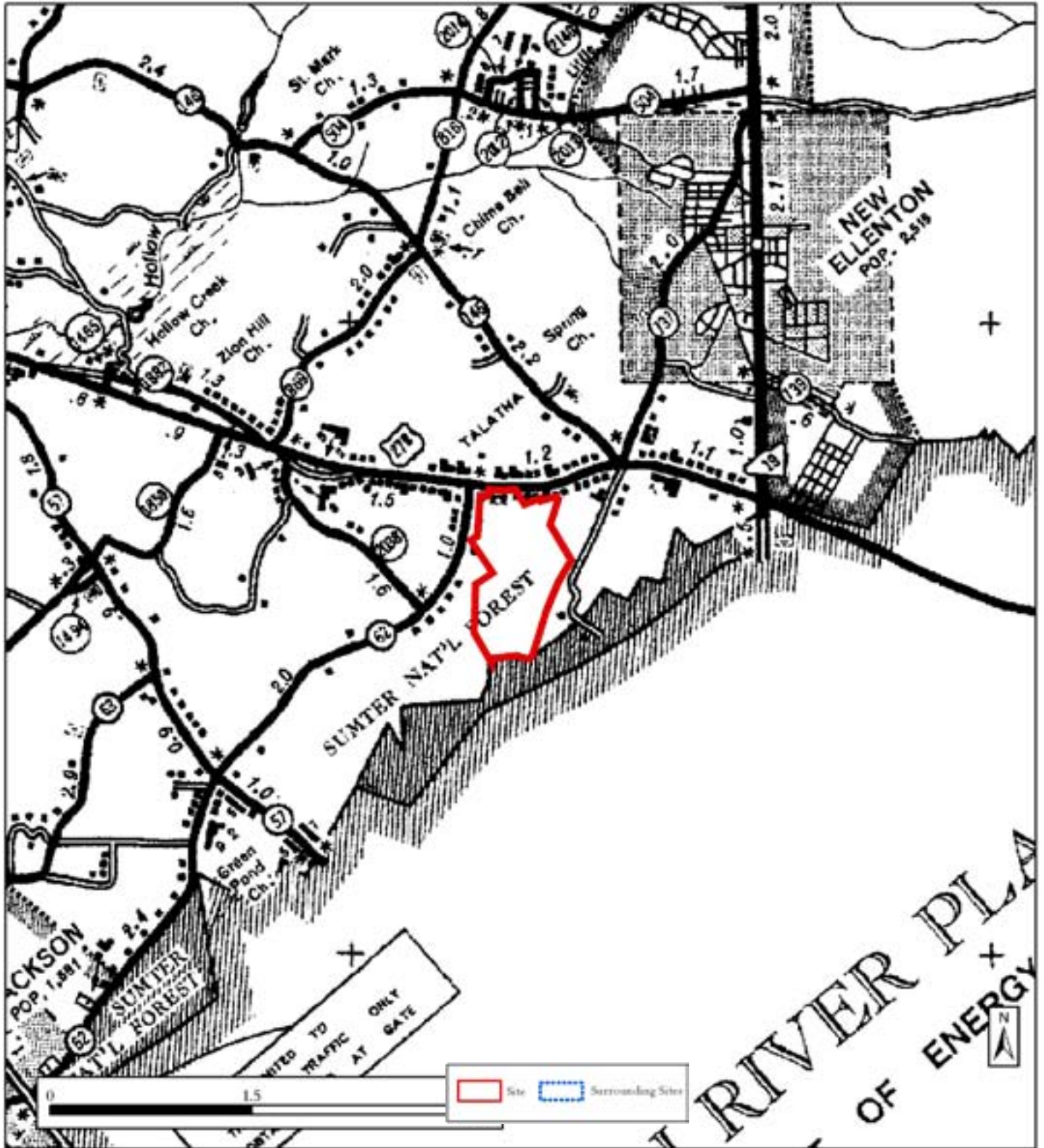
South Carolina Department of Commerce 1201 Main Street, Suite 1600 Columbia, SC 29201 (803) 737-0400 info@sccommerce.com	Aiken - Edgefield Econ. Dev. Partnership PO Box 1708 Aiken SC 29802 (803) 648-3362
--	---

This is a product of the South Carolina Department of Commerce (DOC). The information is derived from various sources and the DOC does not guarantee its accuracy nor make any representations concerning the suitability of the property for any particular purpose.



Utilities and Services

Water Service:	Talatha W/D Wtr line is along W boundary	Remaining Capacity: 0.5118 million gallons/day Size: 12 inches
Sewer Service:	No Service Sewer System being Developed	Remaining Capacity: Size:
Electric Service:	Aiken Electric Cooperative	
Natural Gas:	SC Electric & Gas	Size: 4 inches
Fire Protection:	New Ellenton Fire Dept.	Rating: 6



Aerial Photo

