

Sage Mill Industrial Park

Aiken, South Carolina



Site Information and Location Map

Location

Community: Aiken
County: Aiken

Physical Characteristics

Largest Tract Available:
Total Park Acres: 150 acres/61 hectares
Min. Tract Available: 15 acre(s)
Remaining Acres:
Price Per Acre:
Price Range: \$10,000 to \$20,000
Soil Type: Lakeland Soils
Elevation Range: 350 to 520 feet



Transportation Access

Interstate(s): I-20: 1 miles/2 km; I-26 : 52 miles/84 km
Commercial Airport: Augusta Regional: 22 miles/35 km
Private Airport: Twin Lakes: 3 miles/5 km
Rail: NSR
Container Port: Charleston : 139 miles/222 km

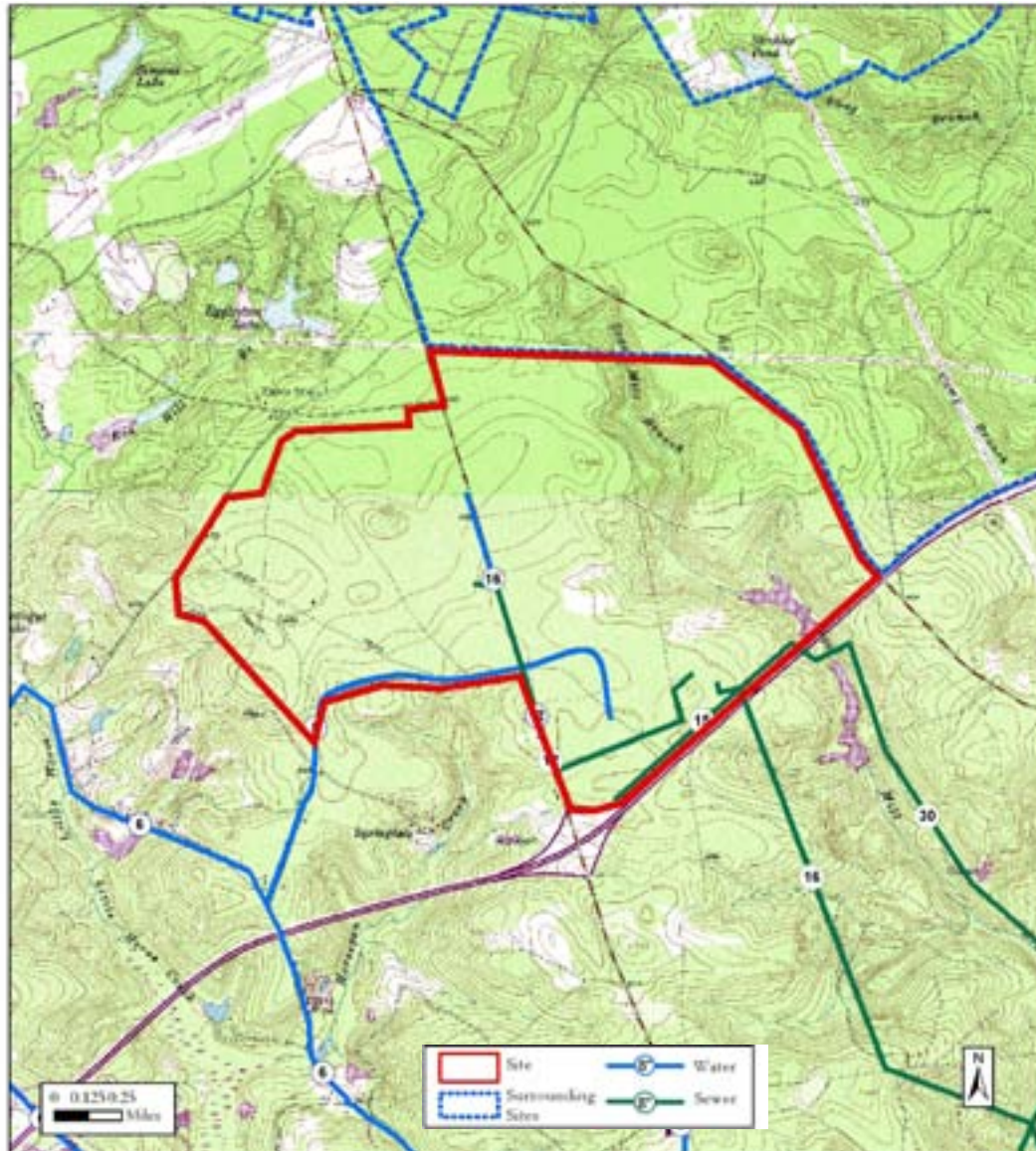
Community Information

Rural Development Act: Developed
Foreign Trade Zone: No
Multicounty Industrial Park: No
Related Counties:
Tax Map ID:
Zoned Industrial: Yes
Zoning or Regulations: RUD (light or heavy Industrial)
Current Landuse(s): Developing Industrial Park
Surrounding Landuse(s): Woodlands

Contacts

South Carolina Department of Commerce 1201 Main Street, Suite 1600 Columbia, SC 29201 (803) 737-0400 info@sccommerce.com	Aiken - Edgefield Econ. Dev. Partnership PO Box 1708 Aiken SC 29802 (803) 641-3300
--	---

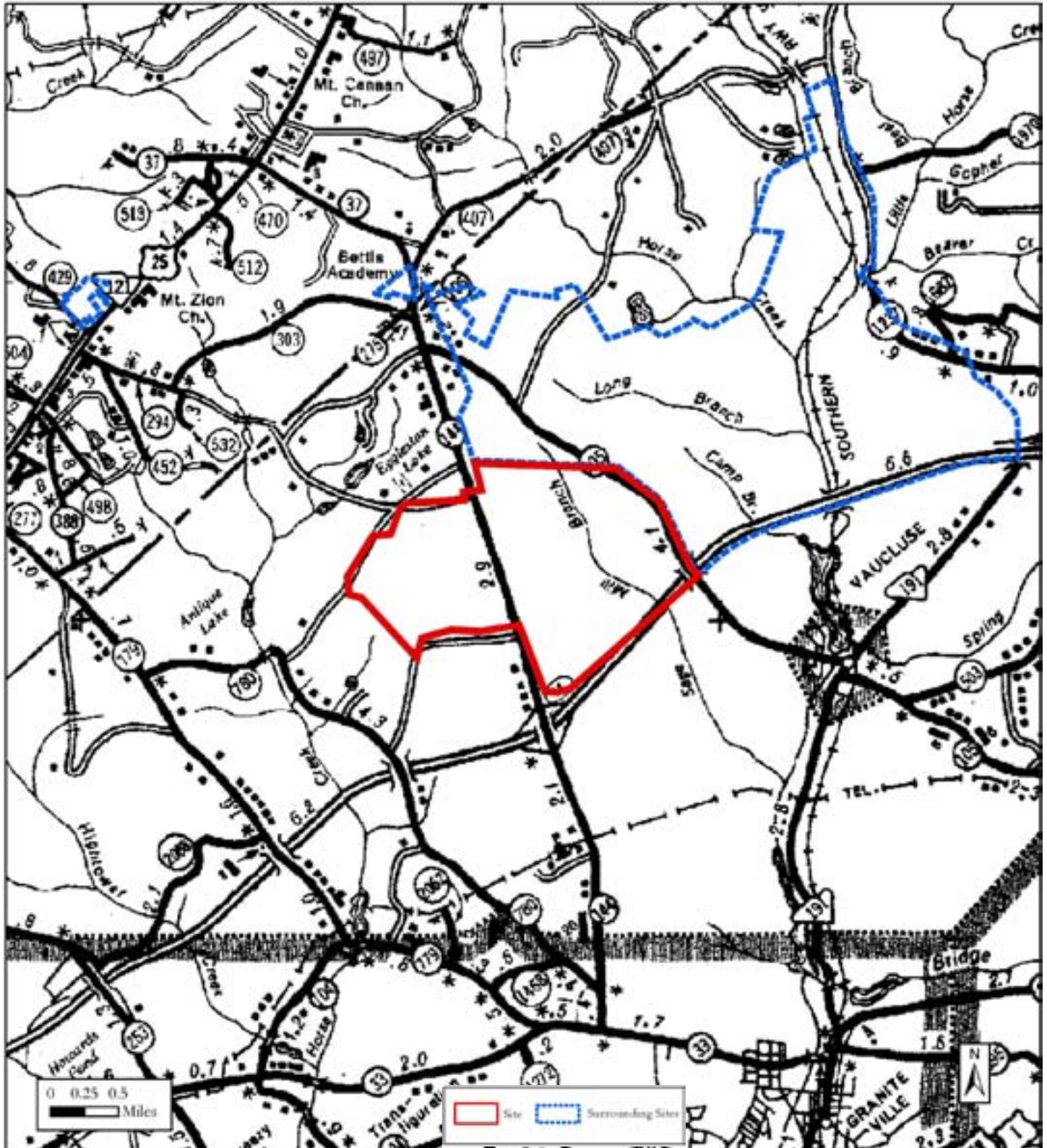
This is a product of the South Carolina Department of Commerce (DOC). The information is derived from various sources and the DOC does not guarantee its accuracy nor make any representations concerning the suitability of the property for any particular purpose.



Utilities and Services

Water Service:	Breezy Hill W/D New Wtr System now in place	Remaining Capacity: 1.4264 million gallons/day Size: 6 inches
Sewer Service:	Aiken Co Pub Sv Auth/Horse Crk New system (Breezy now in place)	Remaining Capacity: 1.065 million gallons/day Size: 12 inches
Electric Service:	South Carolina Electric & Gas Co. Aiken Electric Cooperative	
Natural Gas:	SCE&G	Size: 6 inches
Fire Protection:	Aiken Fire Dept.	Rating: 2

Transportation Map and Surrounding Sites



Aerial Photo

