

Sage Mill East Industrial Park

Aiken, South Carolina



Site Information and Location Map

Location

Community: Aiken
 County: Aiken

Physical Characteristics

Largest Tract Available:
 Total Park Acres: 1380 acres/558 hectares
 Min. Tract Available: 100 acre(s)
 Remaining Acres:
 Price Per Acre:
 Price Range:
 Soil Type: Mostly Lakeland Sand
 Elevation Range: 300 to 600 feet



Transportation Access

Interstate(s): I-20: 4 miles/6 km; I-26 : 50 miles/80 km
 Commercial Airport: Augusta Regional: 25 miles/40 km
 Private Airport: Twin Lakes: 5 miles/8 km
 Rail: NSR
 Container Port: Charleston : 139 miles/222 km

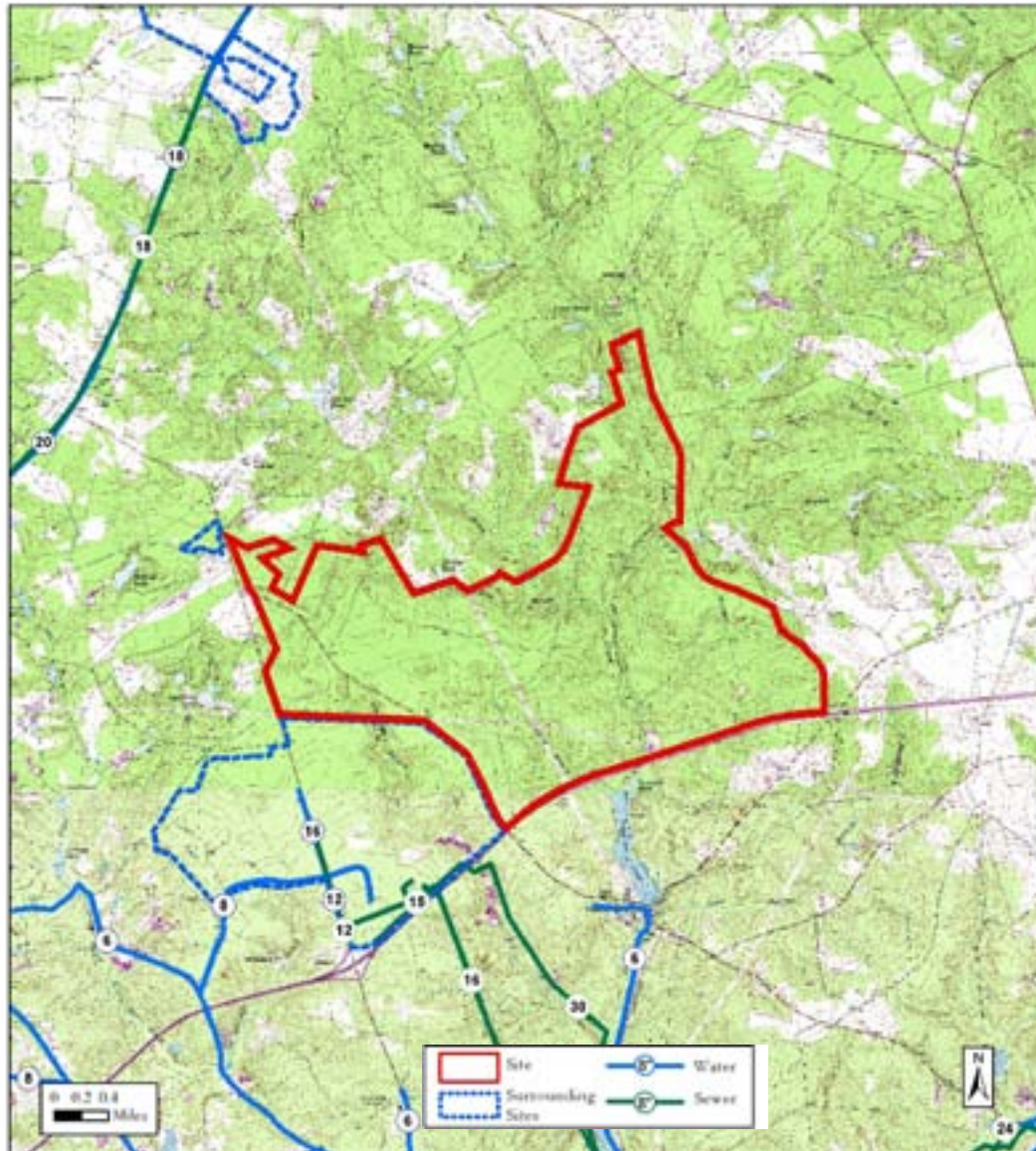
Community Information

Rural Development Act: Developed
 Foreign Trade Zone: No
 Multicounty Industrial Park: No
 Related Counties:
 Tax Map ID:
 Zoned Industrial: Yes
 Zoning or Regulations: (Adjacent to Sage Mill Indus Park)
 Current Landuse(s): Woodlands
 Surrounding Landuse(s): Industrial, Woodlands

Contacts

South Carolina Department of Commerce 1201 Main Street, Suite 1600 Columbia, SC 29201 (803) 737-0400 info@sccommerce.com	Aiken - Edgefield Econ. Dev. Partnership PO Box 1708 Aiken SC 29802 (803) 641-3300
--	---

This is a product of the South Carolina Department of Commerce (DOC). The information is derived from various sources and the DOC does not guarantee its accuracy nor make any representations concerning the suitability of the property for any particular purpose.



Utilities and Services

Water Service:	Breezy Hill W/D New wtr system in place at Sage Mill Prk	Remaining Capacity: 1.4264 million gallons/day Size: 20 inches
Sewer Service:	Aiken Co Pub Sv Auth/Horse Crk New swr system in place at Sage Mill prk	Remaining Capacity: 1.065 million gallons/day Size: 30 inches
Electric Service:	Aiken Electric Cooperative South Carolina Electric & Gas Co.	
Natural Gas:	SC Electric & Gas	Size: 6 inches
Fire Protection:	Aiken Fire Dept.	Rating:

Transportation Map and Surrounding Sites

