



Site Information and Location Map

Location

Community: Edgefield  
County: Edgefield

Physical Characteristics

Largest Tract Available: 43 acres/17 hectares  
Total Park Acres: 269 acres/109 hectares  
Min. Tract Available: 5 acre(s)  
Remaining Acres: 226 acres  
Price Per Acre:  
Price Range: \$8,000 to \$12,000  
Soil Type: Sandy Loam  
Elevation Range: 509 to 624 feet



Transportation Access

Interstate(s): I-20: 7 miles/11 km; I-26 : 49 miles/79 km  
Commercial Airport: Augusta Regional: 26 miles/42 km  
Private Airport: Twin Lakes: 5 miles/8 km  
Rail: None  
Container Port: Charleston : 143 miles/229 km

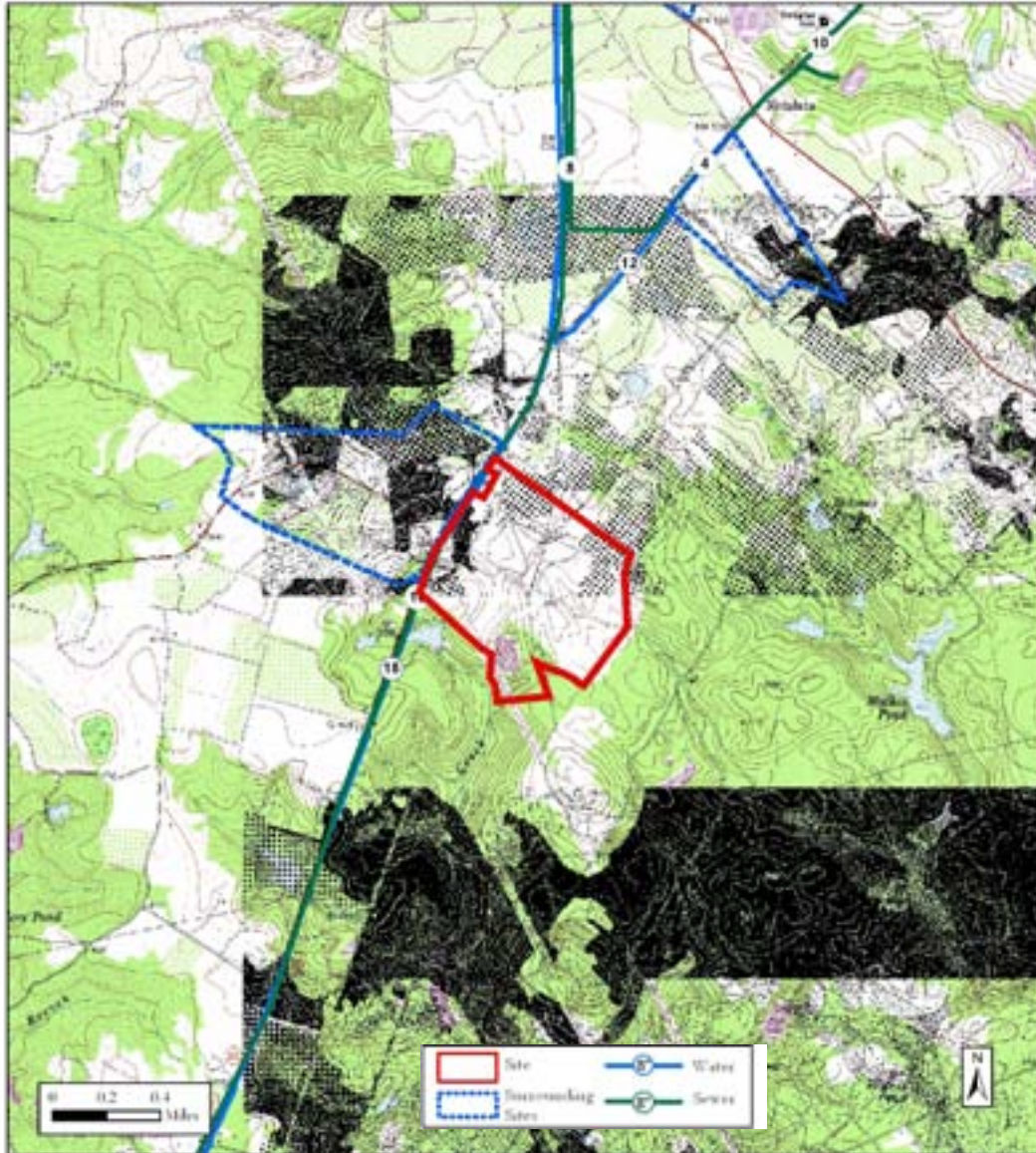
Community Information

Rural Development Act: Least Developed  
Foreign Trade Zone: No  
Multicounty Industrial Park: No  
Related Counties:  
Tax Map ID: 173-0-0-30,75,77; 175-0-0-80,81,82,83  
Zoned Industrial: Yes  
Zoning or Regulations: Industrial Zoning  
Current Landuse(s): Developing Industrial Park  
Surrounding Landuse(s): Agricultural, Commercial

Contacts

South Carolina Department of Commerce  
1201 Main Street, Suite 1600  
Columbia, SC 29201  
(803) 737-0400  
info@sccommerce.com  
Aiken - Edgefield Economic Development Partnership  
PO Box 1708  
Aiken SC 29802  
(803) 648-3362

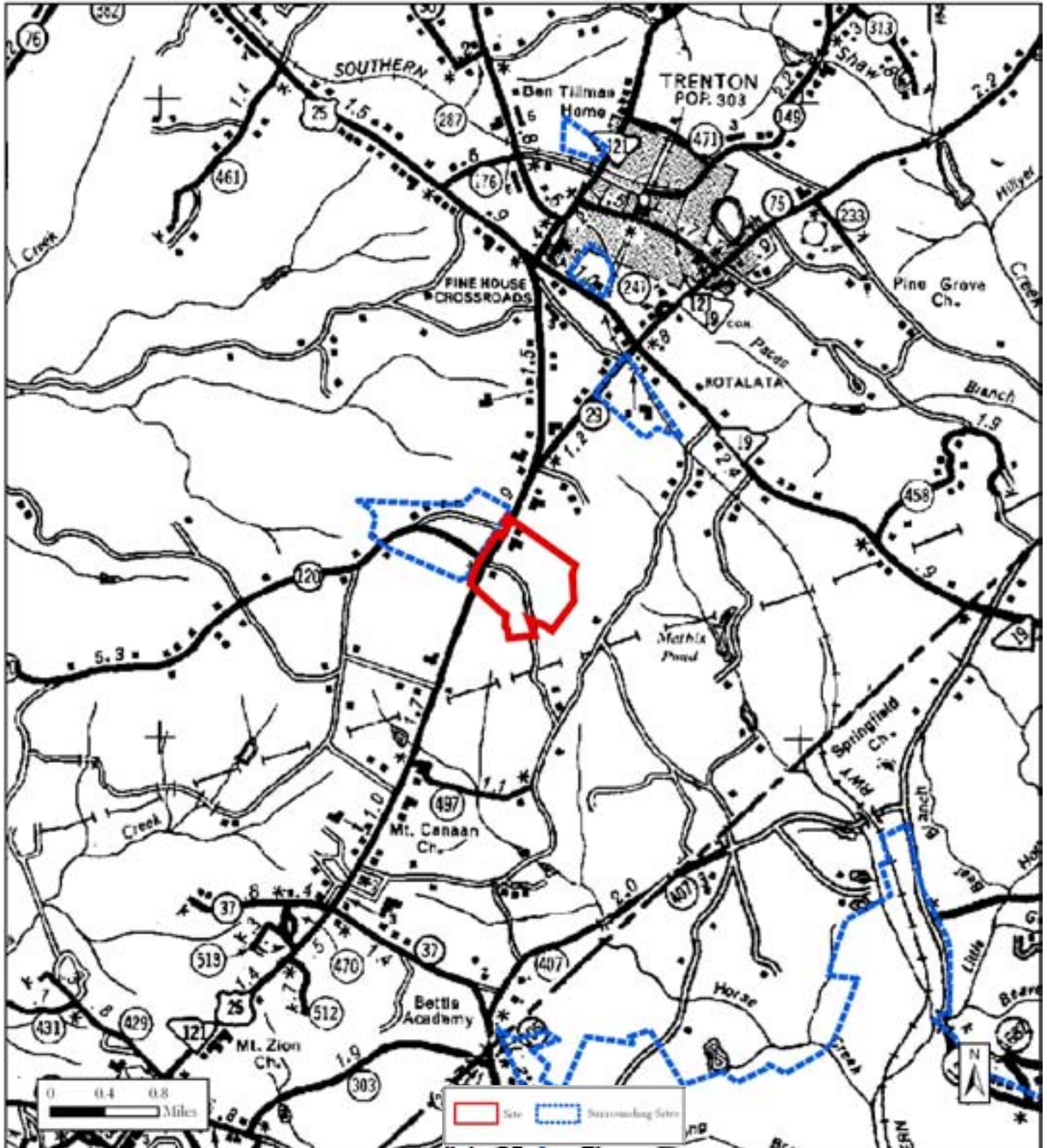
This is a product of the South Carolina Department of Commerce (DOC). The information is derived from various sources and the DOC does not guarantee its accuracy nor make any representations concerning the suitability of the property for any particular purpose.



### Utilities and Services

Water Service:	Edgefield Co W&SA Wtr line is along US 25 at W boundary	Remaining Capacity: -0.3 million gallons/day Size: 18 inches
Sewer Service:	No Service Swr line is along US 25 at W boundary	Remaining Capacity: Size:
Electric Service:	South Carolina Electric & Gas Co.	
Natural Gas:	SC Electric & Gas	Size: 4 inches
Fire Protection:	Edgefield Fire Dept.	Rating: 6

Transportation Map and Surrounding Sites



Aerial Photo

